

Daikin air conditioners  
for your home

FLEXI TYPE UNIT

**R-410A**



[www.daikineurope.com](http://www.daikineurope.com)

**FLKS/FLXS-B**



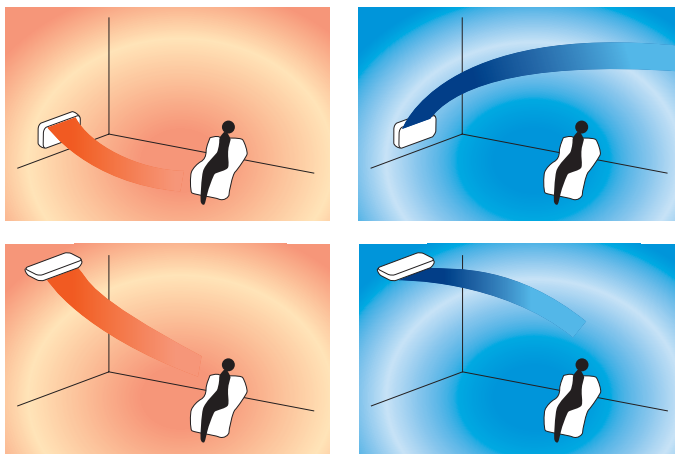


*This Flexi type unit allows both ceiling suspended and floor level installation. The rounded design of this slim and lightweight unit makes the perfect choice for rooms without a false ceiling. Ceiling suspended installation frees up wall and floor space, while floor level installation is possible without loss of warm air.*



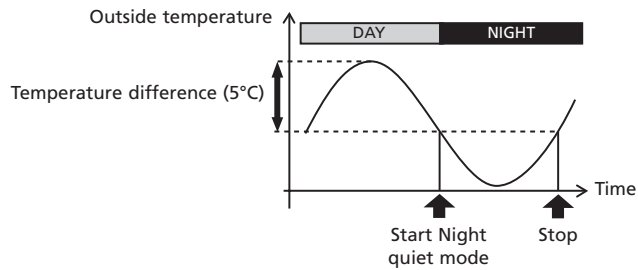
## COMFORT

- **Vertical auto swing and wide angle louvers** ensure that comfortable air flow is spread throughout a large room. A result of these functions, the whole room can be evenly air conditioned for both floor level and ceiling suspended installation. The wide angle louvers can be manually adjusted.



- You have the choice of **5 fan speeds** to select: from high to super low.
- Daikin's special **dry programme** reduces humidity in the room without variations in room temperature.
- The **powerful operation** function boosts the air flow to a maximum volume for a 20-minute period, (e.g. when you come home on a hot day, rapid cooling is required). After this, the unit returns automatically to its previous settings.

- The **night set mode** is automatically selected by pushing the 'off' timer button. This function prevents any sudden change in room temperature by gently raising/lowering the temperature before the air conditioner stops, so you can sleep more comfortably.
- The indoor unit is **very quiet in operation**. The sound levels are as low as 28dB(A), comparable to rustling leaves.
- The **outdoor unit silent operation** function increases comfort by automatically lowering the operating sound of the outdoor unit by 3dB(A).
- The **night quiet mode** reduces the operation sound of the outdoor unit by another 3 dB(A) at night (in combination with Multi models only).



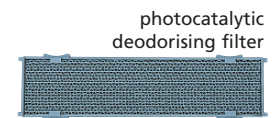
## FILTER

- This floor standing unit is equipped with a **separate air purification filter and a photocatalytic deodorising filter**.

The air purification filter traps mildew, mites, tobacco smoke, dust and pollen as fine as 0.01 micron metres.



The photocatalytic deodorising filter decomposes odours and even deactivates bacteria and viruses. This capability is maintained simply by exposing the filter to sunlight once every 6 months. This filter does not need any replacement.

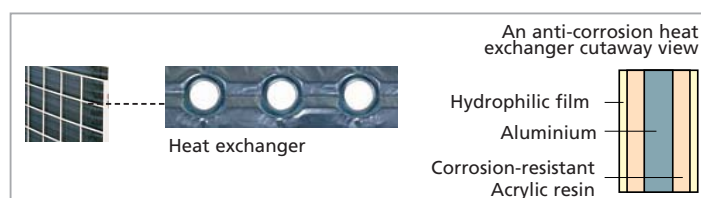


## FLEXIBLE INSTALLATION AND EASY TO USE AND MAINTAIN

- The outdoor unit can be installed on a roof or terrace or placed against an outside wall.
- Daikin remote controls give you **easy control at your fingertips**.
- Malfunction codes are shown on the digital display panel of the infrared remote control for **fast and easy maintenance**.
- Special **anti-corrosion treatment** of the outdoor unit's heat exchanger fin, gives **great resistance against acid rain and salt corrosion**. Additional resistance is provided by a rust proof steel sheet on the underside of the unit.

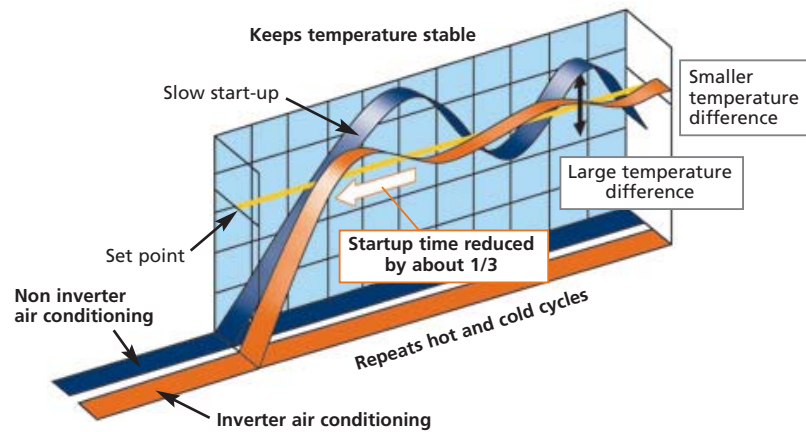


Infrared remote control (Standard)

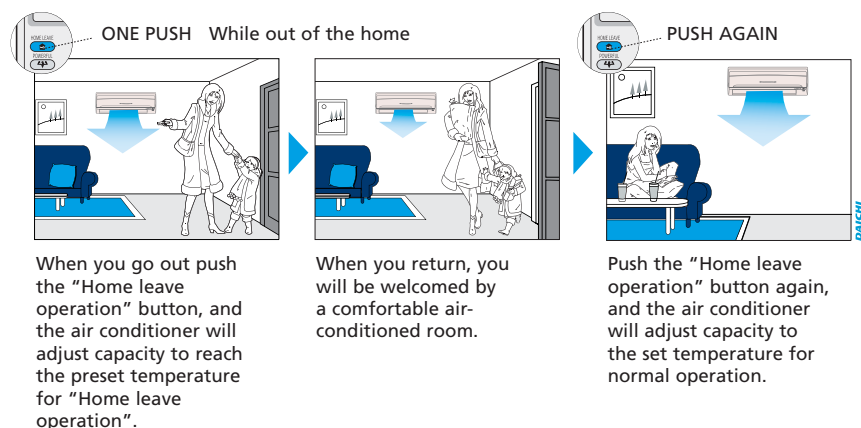


## ENERGY EFFICIENT

- Energy label: up to class A
- **Inverter technology :**  
Improved energy efficiency:  
The use of integrated inverter control ensures maximum **energy efficiency** by supplying only the required heating or cooling load where a standard non inverter unit would supply maximum load in an on/off regime.



- **Improved comfort:**  
The rapid start up time provided by the inverter increases the **comfort** by reducing the lead time in obtaining the required indoor temperature. Once the required temperature is reached, the inverter unit continuously scans the room for small changes and adjusts the room temperature in seconds. There by increasing comfort once again.
- The **home leave operation** button prevents large temperature differences by continuously operating at a minimum (heating mode) or maximum (cooling mode) preset level while you're out or sleeping. It also allows the indoor temperature to return quickly to your favourite comfort level.



## APPLICATION OPTIONS

- This model can be used for cooling only or heating.
- It is possible to use the indoor unit in pair (connecting one indoor to one outdoor) and multi applications (connecting up to 9 units in several rooms to 1 outdoor unit).

## Capacity and power input

| COOLING ONLY - INVERTER/NON INVERTER CONTROLLED<br>(air cooled) |             |             |    | FLKS25B<br>RKS25D | FLKS35B<br>RKS35D | FLKS50B<br>RKS50E | FLKS60B<br>4MKS75E/5MKS90E  | FLKS50B<br>RNS50E |  |
|---|-------------|-------------|----|-------------------|-------------------|-------------------|---|-------------------|--|
| Cooling capacity  | min~nom~max | kW          |    | 1.3~2.5~3.0       | 1.4~3.5~3.8       | 0.90~4.90~5.30    | For more detailed information about capacities, power input, EER, Energy label and annual energy consumption, please refer to our Multi Model catalogue/combination tables or check with your local dealer.     | 4.90 (nom)        |  |
| Nominal input   | min~nom~max | kW          |    | 0.30~0.78~0.96    | 0.30~1.16~1.27    | 0.45~1.72~1.95    |   | 1.72 (nom)        |  |
| EER   |             |             |    | 3.21              | 3.02              | 2.85              |   | 2.85              |  |
| Energy label  |             |             |    | A                 | B                 | C                 |   | C                 |  |
| Annual energy consumption                                       | cooling     | kWh         |    | 390               | 580               | 860               |   | 860               |  |
| HEAT PUMP - INVERTER CONTROLLED (air cooled)                    |             |             |    | FLXS25B<br>RXS25D | FLXS35B<br>RXS35D | FLXS50B<br>RXS50E | FLXS60B<br>4MXS68,80E/5MXS90E   |                   |  |
| Cooling capacity  | min~nom~max | kW          |    | 1.3~2.5~3.0       | 1.4~3.5~3.8       | 0.90~4.90~5.30    | For more detailed information about capacities, power input, EER/COP, Energy label and annual energy consumption, please refer to our Multi Model catalogue/combination tables or check with your local dealer. |                   |  |
| Heating capacity  | min~nom~max | kW          |    | 1.3~3.4~4.5       | 1.4~4.0~5.0       | 0.90~6.10~7.50    |   |                   |  |
| Nominal input   | cooling     | min~nom~max | kW | 0.30~0.78~0.96    | 0.30~1.16~1.27    | 0.45~1.72~1.95    |   |                   |  |
|   | heating     | min~nom~max | kW | 0.29~0.995~1.50   | 0.31~1.245~1.86   | 0.31~1.82~3.54    |   |                   |  |
| EER   |             |             |    | 3.21              | 3.02              | 2.85              |   |                   |  |
| COP   |             |             |    | 3.42              | 3.21              | 3.35              |   |                   |  |
| Energy label  | cooling     |             |    |                   | A                 | B                 |   | C                 |  |
|   | heating     |             |    |                   | B                 | C                 |   | C                 |  |
| Annual energy consumption                                       | cooling     | kWh         |    | 390               | 580               | 860               |   |                   |  |

1) Energy label: scale from A (most efficient) to G (less efficient).

2) Annual energy consumption: based on average use of 500 running hours per year at full load (=nominal conditions)



| POSSIBLE COMBINATIONS   |         | 2MKS40D (1) | 3MKS50E (1) | 4MKS58E(2) | 4MKS75E(2) | 5MKS90E(2) | 2MXS40D*(1) | 2MXS52E*(2) | 3MXS52E*(2) | 4MXS68E*(2) | 4MXS80E*(2) | 5MXS90E*(2) | RMXS112E* | RMXS140E* | RMXS160E* |
|-------------------------|---------|-------------|-------------|------------|------------|------------|-------------|-------------|-------------|-------------|-------------|-------------|-----------|-----------|-----------|
| Max. n° of indoor units |         | 2           | 3           | 4          | 4          | 5          | 2           | 2           | 3           | 4           | 4           | 5           | 7         | 8         | 9         |
| Cooling only            | FLKS25B | •           | •           | •          | •          | •          |             |             |             |             |             |             |           |           |           |
|                         | FLKS35B | •           | •           | •          | •          | •          |             |             |             |             |             |             |           |           |           |
|                         | FLKS50B |             |             | •          | •          | •          |             |             |             |             |             |             |           |           |           |
|                         | FLKS60B |             |             |            | •          | •          |             |             |             |             |             |             |           |           |           |
| Heat pump               | FLXS25B |             |             |            |            |            | •           | •           | •           | •           | •           | •           | •         | •         | •         |
|                         | FLXS35B |             |             |            |            |            | •           | •           | •           | •           | •           | •           | •         | •         | •         |
|                         | FLXS50B |             |             |            |            |            |             | •           | •           | •           | •           | •           | •         | •         | •         |
|                         | FLXS60B |             |             |            |            |            |             |             | •           | •           | •           | •           | •         | •         | •         |
| Max. cooling capacity   | kW      | 4.20        | 7.07        | 7.30       | 9.28       | 10.50      | 4.20        | 6.92        | 7.30        | 8.68        | 9.60        | 10.50       | 11.2      | 14.0      | 15.5      |
| Max. heating capacity   | kW      | N/A         | N/A         | N/A        | N/A        | N/A        | 4.70        | 7.98        | 8.30        | 10.64       | 11.00       | 11.50       | 12.5      | 16.0      | 17.5      |
| Max. PI cooling         | kW      | 1.52        | 2.16        | 2.24       | 3.54       | 3.98       | 1.52        | 2.25        | 2.25        | 3.69        | 3.56        | 4.01        | 3.50      | 5.09      | 5.40      |
| Max PI heating          | kW      | N/A         | N/A         | N/A        | N/A        | N/A        | 1.87        | 2.51        | 2.51        | 3.41        | 3.11        | 3.46        | 3.93      | 5.21      | 5.43      |

Notes:

- For more detailed information, please consult our multi model/combination tables catalogue or your local dealer.
- (1) The indicated cooling, heating capacities and power input are indicative and are those connected to wall mounted D (25,35 class) series  
(2) The indicated cooling, heating capacities and power input are indicative and are those connected to wall mounted D (25,35 class) /E (50, 60 class) series
- N/A means not applicable since this unit is a cooling only unit
- \*At least two indoor units should be connected to these multi outdoor units

## Specifications indoor units

| COOLING ONLY         |         |        |        | FLKS25B                   | FLKS35B     | FLKS50B      | FLKS60B      |
|----------------------|---------|--------|--------|---------------------------|-------------|--------------|--------------|
| Dimensions           | HxWxD   |        | mm     | 490x1,050x200             |             |              |              |
| Weight               |         |        | kg     | 16                        | 16          | 17           | 17           |
| Front panel colour   |         |        |        | almond white              |             |              |              |
| Air flow rate        | H/L/SL  |        | m³/min | 7.6/6.0/5.2               | 8.6/6.6/5.6 | 11.4/8.5/7.5 | 12.0/9.3/8.3 |
| Fan speed            |         |        | steps  | 5 steps, silent and auto  |             |              |              |
| Sound pressure level | H/L/SL  |        | dB(A)  | 37/31/28                  | 38/32/29    | 47/39/36     | 48/41/39     |
| Sound power level    | H       |        | dB(A)  | 53                        | 54          | 63           | 64           |
| Piping connections   | liquid  |        | mm     | ø6.4                      |             |              |              |
|                      | gas     |        | mm     | ø9.5                      |             | ø12.7        |              |
|                      | drain   |        | mm     | ø18.0                     |             |              |              |
| Heat insulation      |         |        |        | both liquid and gas pipes |             |              |              |
| HEAT PUMP            |         |        |        | FLXS25B                   | FLXS35B     | FLXS50B      | FLXS60B      |
| Dimensions           | HxWxD   |        | mm     | 490x1,050x200             |             |              |              |
| Weight               |         |        | kg     | 16                        | 16          | 17           | 17           |
| Front panel colour   |         |        |        | almond white              |             |              |              |
| Air flow rate        | cooling | H/L/SL | m³/min | 7.6/6.0/5.2               | 8.6/6.6/5.6 | 11.4/8.5/7.5 | 12.0/9.3/8.3 |
|                      | heating | H/L/SL | m³/min | 9.2/7.4/6.6               | 9.8/8.0/7.2 | 12.1/7.5/6.8 | 12.8/8.4/7.5 |
| Fan speed            |         |        | steps  | 5 steps, silent and auto  |             |              |              |
| Sound pressure level | cooling | H/L/SL | dB(A)  | 37/31/28                  | 38/32/29    | 47/39/36     | 48/41/39     |
|                      | heating | H/L/SL | dB(A)  | 37/31/29                  | 39/33/30    | 46/35/33     | 47/37/34     |
| Sound power level    | cooling | H      | dB(A)  | 53                        | 54          | 63           | 64           |
| Piping connections   | liquid  |        | mm     | ø6.4                      |             |              |              |
|                      | gas     |        | mm     | ø9.5                      |             | ø12.7        |              |
|                      | drain   |        | mm     | ø18.0                     |             |              |              |
| Heat insulation      |         |        |        | both liquid and gas pipes |             |              |              |

## Indoor units: FLKS/FLXS-B



FLK/XS25,35,50,60B



FLK/XS25,35,50,60B

## Specifications outdoor units

| COOLING ONLY - INVERTER/NON INVERTER CONTROLLED |           |           |       | RKS25D                                    | RKS35D | RKS50E                                 | RN50E                                  |
|---|-----------|-----------|-------|---|--------|--|--|
| Dimensions                                      | HxWxD     |           | mm    | 550x765x285                               |        | 735x825x300                            | 735x825x300                            |
| Weight  |           |           | kg    | 30  | 32     | 47                                     | 47                                     |
| Casing colour                                   |           |           |       | Ivory white                               |        | Ivory white                            | Ivory white                            |
| Sound pressure level                            | H/L       |           | dB(A) | 46/43                                     | 47/44  | 47/44                                  | 47/*                                   |
| Sound power level                               | H         |           | dB(A) | 61  | 62     | 61                                     | 61                                     |
| Compressor                                      |           |           |       | hermetically sealed swing type            |        | hermetically sealed swing type         | hermetically sealed swing type         |
| Refrigerant type                                |           |           |       | R-410A                                    |        | R-410A                                 | R-410A                                 |
| Refrigerant charge                              |           |           | kg/m  | 0.02<br>(for piping length exceeding 10m) |        | 0.02 (for piping length exceeding 10m) | 0.02 (for piping length exceeding 10m) |
| Maximum piping length                           |           |           | m     | 20  |        | 30                                     | 30                                     |
| Maximum level difference                        |           |           | m     | 15  |        | 20                                     | 20                                     |
| Operation range                                 | from ~ to |           | °CDB  | -10~46                                    |        | -10(-15**)~46                          | +10~46                                 |
| HEAT PUMP - INVERTER CONTROLLED                 |           |           |       | RXS25D                                    | RXS35D | RXS50E                                 |  |
| Dimensions                                      | HxWxD     |           | mm    | 550x765x285                               |        | 735x825x300                            |  |
| Weight  |           |           | kg    | 30  | 32     | 47                                     |  |
| Casing colour                                   |           |           |       | Ivory white                               |        | Ivory white                            |  |
| Sound pressure level                            | cooling   | H/L       | dB(A) | 46/43                                     | 47/44  | 47/44                                  |  |
|   | heating   | H/L       | dB(A) | 47/44                                     | 48/45  | 48/45                                  |  |
| Sound power level                               | cooling   | H         | dB(A) | 61  | 62     | 61                                     |  |
| Compressor                                      |           |           |       | hermetically sealed swing type            |        | herm. seal. swing type                 |  |
| Refrigerant type                                |           |           |       | R-410A                                    |        | R-410A                                 |  |
| Refrigerant charge                              |           |           | kg/m  | 0.02<br>(for piping length exceeding 10m) |        | 0.02 (for piping length exceeding 10m) |  |
| Maximum piping length                           |           |           | m     | 20  |        | 30                                     |  |
| Maximum level difference                        |           |           | m     | 15  |        | 20                                     |  |
| Operation range                                 | cooling   | from ~ to | °CDB  | -10~46                                    |        | -10~46                                 |  |
|   | heating   | from ~ to | °CWB  | -15~20                                    |        | -15~20                                 |  |

\* This information was not available at the time of publication.

\*\* Possibility to extend the operation range down to -15°C by turning ON the switch on the outdoor unit PCB. In this case, the unit will stop operation at -20°C or lower and will recover when temperature rises again.



## Accessories: control systems

| INDOOR UNITS   |                           | FLK/XS25B | FLK/XS35B | FLK/XS50B | FLK/XS60B |
|--|---------------------------|-----------|-----------|-----------|-----------|
| Wiring adapter for time clock/<br>remote control (1) | normal open contact       |           |           | KRP413A1S |           |
|  | normal open pulse contact |           |           | KRP413A1S |           |
| Centralised control board                            | up to 5 rooms (2)         |           |           | KRC72     |           |
| Central remote control                               |                           |           |           | DCS302C51 |           |
| Unified ON/OFF control                               |                           |           |           | DCS301B51 |           |
| Schedule timer                                       |                           |           |           | DST301B51 |           |
| Interface adapter (3)                                |                           |           |           | KRP928A2S |           |

(1) Wiring adapter is supplied by Daikin. Timer and other devices: field supply.

(2) Wiring adapter is also required for each indoor unit.

(3) For DIII-NET adapter

## Accessories

| INDOOR UNITS                                     |  | FLK/XS25B | FLK/XS35B | FLK/XS50B | FLK/XS60B |
|--|--|-----------|-----------|-----------|-----------|
| Photocatalytic deodorising filter, with frame    |  |           |           | KAZ917B41 |           |
| Photocatalytic deodorising filter, without frame |  |           |           | KAZ917B42 |           |
| Air purification filter, with frame              |  |           |           | KAF925B41 |           |
| Air purification filter, without frame           |  |           |           | KAF925B42 |           |
| Anti-theft protection for remote control         |  |           |           | KKF917AA4 |           |

## Accessories

| OUTDOOR UNITS                   |  | RK/XS25D | RK/XS35D | RK/XS50E/RN50E |
|---------------------------------|--|----------|----------|----------------|
| Air direction adjustment grille |  | KPW937A4 |          | KPW945A4       |

Note: 1) VM = 1~, 220-240/220-230V, 50/60Hz / V1 = 1~, 220-240V, 50Hz

2) Nominal cooling capacities are based on: indoor temperature 27°CDB/19°CWB • outdoor temperature 35°CDB • refrigerant piping length 7.5m • level difference 0m.

3) Nominal heating capacities are based on: indoor temperature 20°CDB • outdoor temperature 7°CDB/6°CWB • refrigerant piping length 7.5m • level difference 0m.

4) Capacities are net, including a deduction for cooling (an addition for heating) for indoor fan motor heat.

5) Units should be selected on nominal capacity. Max. capacity is limited to peak periods.

6) The sound pressure level is measured via a microphone at a certain distance from the unit (for measuring conditions: please refer to the technical databooks).

7) The sound power is an absolute value indicating the "power" which a sound source generates.

In all of us,  
a green heart



Daikin's unique position as a manufacturer of air conditioning equipment, compressors and refrigerants has led to its close involvement in environmental issues. For several years Daikin has had the intention to become a leader in the provision of environmental friendly products. This challenge demands the eco design and development of a wide range of products and an energy management system; which involves energy conservation and reduction of waste.



Daikin Europe N.V. is approved by LRQA for its Quality Management System in accordance with the ISO9001 standard.

ISO9001 pertains to quality assurance regarding design, development, manufacturing as well as to services related to the product.



ISO14001 assures an effective environmental management system in order to help protect human health and the environment from the potential impact of our activities, products and services and to assist in maintaining and improving the quality of the environment.



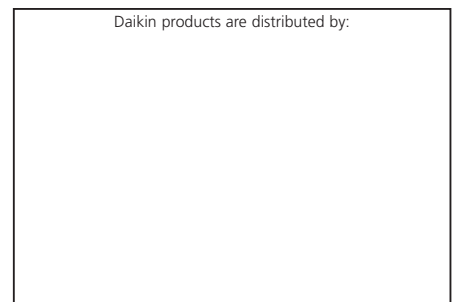
Daikin units comply with the European regulations that guarantee the safety of the product.



Daikin Europe N.V. participates in the Eurovent Certification Programme for Air Conditioners (AC), Liquid Chilling Packages (LCP) and Fan Coil Units (FC); the certified data of certified models are listed in the Eurovent Directory. Multi units are Eurovent certified for combinations up to 2 indoor units.

The present leaflet is drawn up by way of information only and does not constitute an offer binding upon Daikin Europe N.V.. Daikin Europe N.V. has compiled the content of this leaflet to the best of its knowledge. No express or implied warranty is given for the completeness, accuracy, reliability or fitness for particular purpose of its content and the products and services presented therein. Specifications are subject to change without prior notice. Daikin Europe N.V. explicitly rejects any liability for any direct or indirect damage, in the broadest sense, arising from or related to the use and/or interpretation of this leaflet. All content is copyrighted by Daikin Europe N.V..

Daikin products are distributed by:



**DAIKIN EUROPE N.V.**

Zandvoordestraat 300

B-8400 Oostende, Belgium

www.daikineurope.com